

Minimally Invasive Dentistry

Special Needs Dentistry
Russell W. Reddell, DDS, MBA

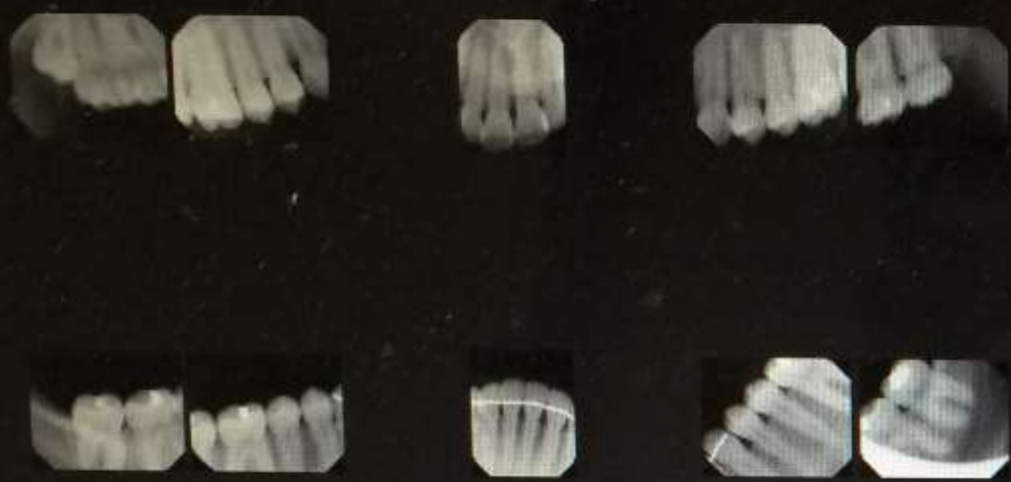
Technological Advances

- Digital Radiographs
- Electronic Records (On the Cloud)
- 2D Intraoral Cameras
- Caries detection without an explorer (CariVu, Diagnodent)
- Silver Diamine Fluoride
- Needleless Local Anesthesia (Kovanaze)

The dental chart is organized into four quadrants: UR (Upper Right), UL (Upper Left), LR (Lower Right), and LL (Lower Left). The teeth are numbered as follows: UR (1-16), UL (14-16), LR (32-17), and LL (17-18). The chart displays various clinical annotations:

- UR Quadrant:** Teeth 5 and 6 have red diagonal hatching on their buccal surfaces. Teeth 14 and 15 have blue hatching on their lingual surfaces.
- UL Quadrant:** Teeth 14 and 15 have blue hatching on their lingual surfaces.
- LR Quadrant:** Teeth 30 and 31 have blue hatching on their lingual surfaces. A large black oval encircles teeth 31 and 30, with an arrow pointing to the right. A blue vertical line is drawn on the lingual surface of tooth 29.
- LL Quadrant:** Teeth 18 and 17 have blue hatching on their lingual surfaces. A blue horizontal double-headed arrow is drawn across the lingual surface of tooth 18.

Oral Full Mouth Images 10/03/2017



2D Oral/Facial Photo Images 10/03/2017



Oral/Facial Photo Images 10/03/2017



Extraoral X-ray

There are no images of this type.

Copyright © 2013 - 2017 Henry Schein Practice Solutions | All Rights Reserved | Version: 3056df4e9a7d

Fills connected image.png



MacBook Air



Reimbursement

- Radiographs - same
- Electronic Records - none
- 2D images - New Code (D0250)
- Caries detection - none
- SDF - same as other Fluorides (D1206 / D1208)
- Needleless Anesthesia -same (Included in Procedure)



New CDT Codes

- More accurate coding - fewer rejections and faster returns
- Diabetes Testing
- New Prosthodontic Codes
- Changes to Anesthesia Codes
- Codes for Teledentistry

